



**BROWARDSM
COLLEGE**

DUAL ENROLLMENT

**Presented By: Odalys Garcia
Dual Enrollment Coordinator**

WHY CHOOSE BC?

- Founded in 1960, BC is the oldest and largest institution of higher education in Broward County.
- BC is an accredited public institution of higher education (SACS COC).
- The Aspen Institute named BC one of the top ten community colleges in the nation.
- Small class sizes, affordable, accessible



**BROWARDSM
COLLEGE**






TYPES OF DEGREES

- Certificates
- Associate in Science (A.S.)
- Associate in Applied Science (A.A.S.)
- Associate in Arts (A.A.)
- Bachelor of Science (B.S.)
- Bachelor of Applied Science (B.A.S.)



8 Career Pathways

- **Arts, Humanities, Communication and Design** 
- **Business** 
- **Social, Behavioral & Human Services** 
- **Health Sciences**  
- **Industry, Manufacturing, Construction & Transportation**
- **Public Safety** 
- **Science, Technology, Engineering & Math** 
- **Education** 

HOW MUCH DOES BC COST?

\$117.90 per credit (in-state fee rate)

\$373.00 per credit (out-of-state fee rate)

Each class is about 3
credits each

Full time students take
30 credits per year



It will cost
approximately
\$3,480.00 for in-
state tuition per
year.

HONORS COLLEGE

- Incoming high school students
 - Unweighted HS GPA of 3.5
 - SAT – 1190 (min. 610 EBRW, 570 Math)
 - ACT – 22 (min. 21 English, 21 Math, 22 Reading)
 - PERT – 113 Reading, 123 Math, 123 Writing
- Currently enrolled BC students
 - College level test scores
 - Earned at least 6 college-level credits
 - 3.5 Overall/Honors GPA



www.broward.edu/honors

**BROWARDSM
COLLEGE**

WHAT IS DUAL ENROLLMENT?

Dual enrollment is an accelerated program that allows secondary students to take post secondary coursework and simultaneously earn both high school and college credits, saving both time and money.



**BROWARDSM
COLLEGE**

ELIGIBILITY REQUIREMENTS

Initial Eligibility

- Minimum unweighted HS GPA of 3.0
- College level test scores in English, Reading and Math
 - Achieved through the ACT, SAT, PERT, or ACCUPLACER NG
- Permission from parent and school counselor

Continued Eligibility

- Earn a grade of "C" or higher in each course
- Maintain unweighted HS GPA of 3.0
- Complete DE Recommendation Form each term

PLACEMENT TESTING

Placement test	English	Reading	Math
SAT	25+ (Writing and Language)	24+ (Reading)	24 - 26.4 (MAC1105C, MGF1106, MGF1107) 26.5+ (MAC1105)
ACT	17+ (English)	19+ (Reading)	19-20 (MAC1105C, MGF1106, MGF1107) 21+ (MAC1105)
PERT	103+ (Writing) and 106+ (Reading)	106+ (Reading)	114-122 (MAC1105C, MGF1106, MGF1107) 123+ (MAC1105)
ACCUPLACER Next Gen	245+	245+	242 – 258 (MAC1105C, MGF1106, MGF1107) 259+ (MAC1105)



**BROWARDSM
COLLEGE**

DUAL ENROLLMENT vs. EARLY ADMISSIONS

Dual Enrollment	Early Admissions
School counselor advises allowed credits per term (May not be full time)	Must enroll into a minimum of 12 credits (Must be full time)
Can be in any grade in high school	Must be a senior in high school
Not required to enroll in consecutive terms	Must enroll for the Fall and Spring Terms
Take courses at college while still attending high school	Only take BC courses



DID YOU KNOW?



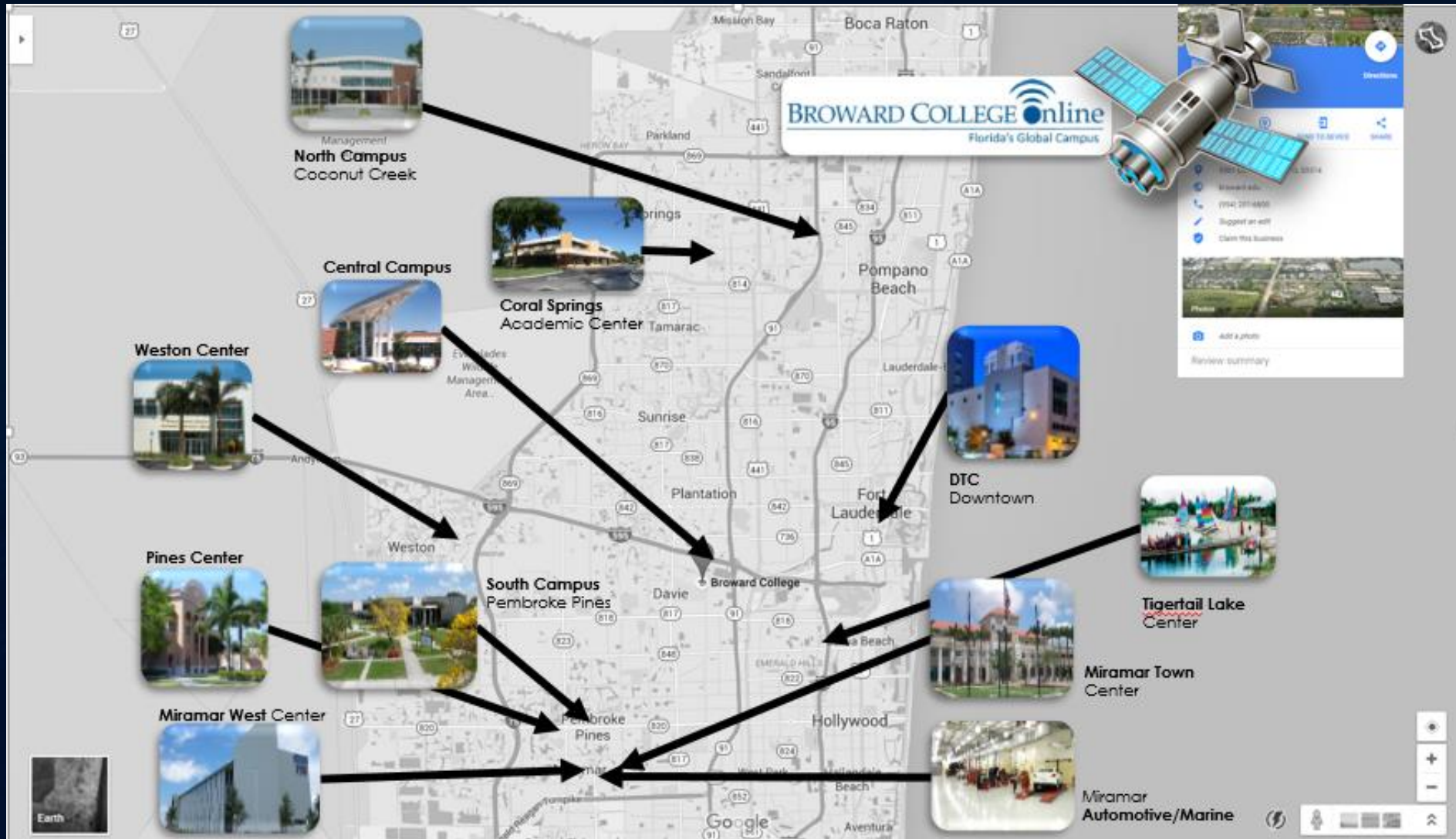
Dual Enrollment Courses

- Will transfer to any Florida public college or university
- Count towards the beginning of your college transcripts
- May not be repeated while still enrolled in the dual enrollment program (includes withdrawals)
- Are FREE!! Application and tuition fees are waived

WHAT CLASSES SHOULD I REGISTER FOR?

- ✓ Review with your counselor what courses you have left to complete for high school graduation.
 - ✓ *The most important thing to remember is that graduating from high school is your first priority.*
- ✓ General education courses
- ✓ What do you want your major to be in college?
- ✓ Should not take courses at BC that you are already going to earn credit for from an AP class.

WHERE CAN I TAKE MY CLASSES?



- ✓ You are eligible to take courses at any BC location.
- ✓ There are 4 main campuses and 8 centers.
- ✓ You can also take courses online or remotely.

BROWARDSM
COLLEGE

HOW AND WHEN DO I REGISTER FOR CLASSES?

- ✓ Log into your BC One Access account beginning the first day of registration.
- ✓ Register for your courses online and provide your schedule back to your counselor.

Registration Date for Fall Term 2021

May 27th, 2021

Classes Begin – August 18th, 2021



BROWARDSM
COLLEGE

BC Term and Sessions

- ✓ **Fall and Spring Term**
 - ✓ Session 1 – 16 weeks
 - ✓ Session 2 – First 8 weeks
 - ✓ Session 3 – 12 weeks
 - ✓ Session 4 – Last 8 weeks

DROP/WITHDRAWAL PROCESS

Students drop/withdraw online or at a BC by drop or withdrawal date located on student schedule

- ✓ **Drop Date:** About a week after class begins depending on session
 - ✓ Cancels Course Registration
- ✓ **Withdrawal Date:** Occurs 60% into a session
 - ✓ Last date a student can withdraw without grade penalty
- ✓ **Link to Academic Calendar online:**
 - ✓ <http://www.broward.edu/calendar/Pages/term-dates.aspx>

ACCESSIBILITY RESOURCES

- ✓ If you currently receive accommodations at your high school for a disability **AND** you would like accommodations here at BC, you must contact the Accessibility Resources Office at a BC Campus.
- ✓ You cannot decide at the end of the term that because you are receiving a failing grade that you now want services.
- ✓ **Best to get the services set up so they can be used at any time.**
- ✓ It is **NOT** automatic! You must self-disclose.
- ✓ Information is kept private.
- ✓ www.broward.edu/accessibility



PARKING AND TEXTBOOKS

✓ Parking

- ✓ Order your parking decal online at www.broward.edu/parking.
- ✓ Your parking decal will be mailed to you.
- ✓ Any issues, contact campus safety at 954-201-4357.



✓ Textbooks

- ✓ Order your books online or go to the bookstore to pick them up.
- ✓ Advise the bookstore staff you are DE and what school you attend.
- ✓ Not required to pay for books, access codes, lab coats and goggles, and select art supplies.

HOW TO GET STARTED

- ✓ Meet with your school counselor to confirm you meet the eligibility requirements.
- ✓ Apply to BC online at www.broward.edu.
- ✓ Take a BC approved common placement exam (if needed).
- ✓ Work with your school counselor to complete the course selection process.
- ✓ Submit your DE Recommendation Form to your school counselor by the **deadline date** each term.

HOW TO GET STARTED

- ✓ Visit www.broward.edu/dual
- ✓ Students must apply to BC first and log into their BC One Access account to set up security questions before you can access the online DE Recommendation Form.



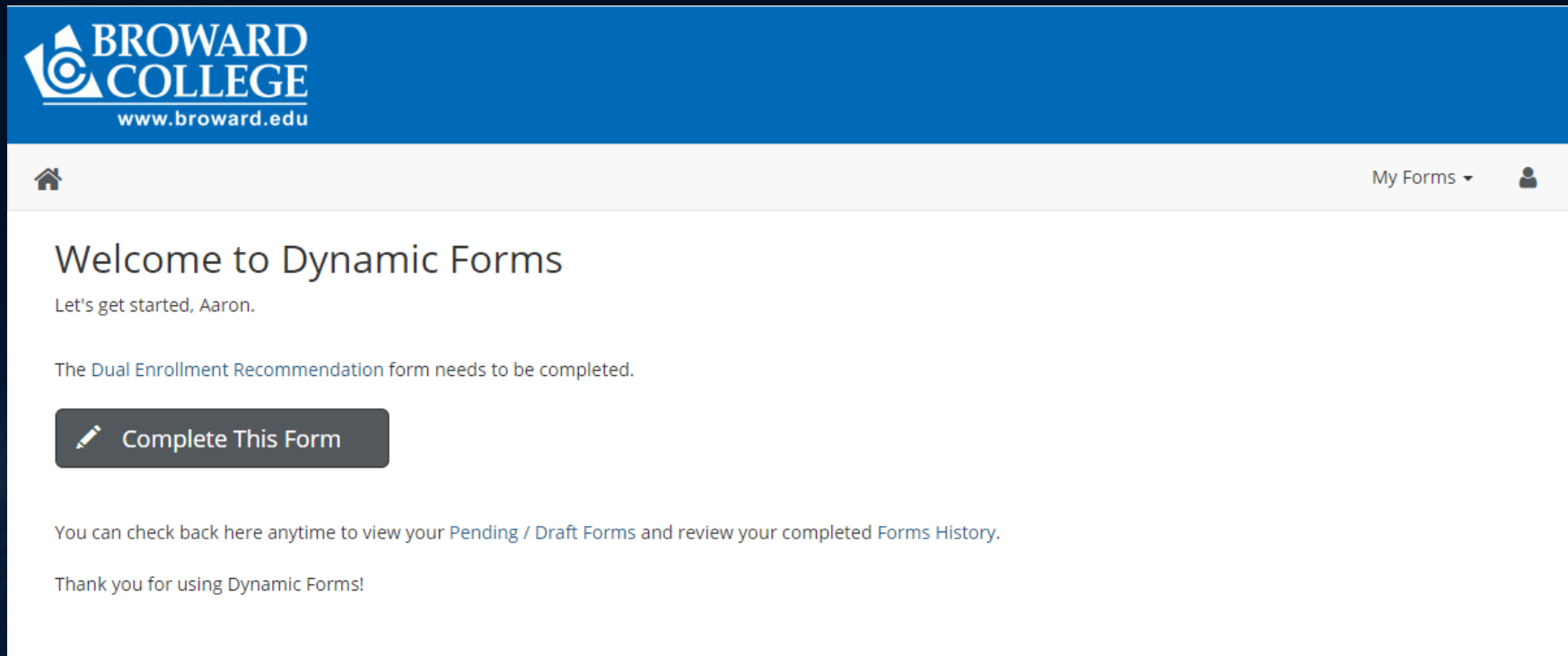
Student Guide: How to Access the Dual Enrollment Recommendation Form

- 1) Go to www.broward.edu/dual.
- 2) Click on the tile for [Students](#).
- 3) Scroll down to [HOW TO GET STARTED](#). Choose the tab for your school type.
 - a. [New](#) students should start with [Step 1](#).
 - b. [Continuing](#) students should start with [Step 3](#).
- 4) Under [Step 3](#) click on the link for [Dual Enrollment Recommendation Form](#).
- 5) You will be prompted to log into your [BC One Access Account](#) and fill out your [Dual Enrollment Recommendation Form](#).



HOW TO GET STARTED

What a student sees after clicking on the link for DE form from website and logging into BC Account.




Student clicks "Complete This Form"

HOW TO GET STARTED

Student confirmation message after form submitted.



You have successfully submitted a Dual Enrollment Recommendation Form. For further processing, the parent or legal guardian you specified must provide their signature. The form will be routed to your high school counselor after your parent/guardian has signed. Please ask him/her to review their e-mail for the next step. For more information, please visit our [Dual Enrollment Home Page](#).

 [View Form PDF](#)



Connect with Broward College

www.broward.edu/dual



[http://www.facebook.com/
BrowardCollege](http://www.facebook.com/BrowardCollege)



Twitter: @BrowardCollege

Any questions?

**BROWARDSM
COLLEGE**